

## Amphan Aftermath: Here's How MUKTI Is Helping Locals in Sundarbans Rebuild Their Lives Again

**Sundarbans, a UNESCO world heritage site** in West Bengal India, is home to one of the largest mangrove forests in the world, with a rich diversity of both terrestrial and aquatic flora and fauna. Sundarbans mangrove ecosystem is the safeguard and livelihood support for 3.2 million climate vulnerable coastal people. The Sundarbans is not only ecologically important: millions of people also rely on the Sundarbans Delta for their livelihood, whether it be for timber, sustenance fishing, or gatherings. **We at MUKTI** has been actively working in **9 blocks of South 24 Pgs and 1 block of North 24 Pgs district of West Bengal covering 50,000 households** in almost **44 communities** since 2003.

### Cyclone Bulbul (10<sup>th</sup> November 2019)

10<sup>th</sup> November 2019 was a day of terror for Sundarbans people as Cyclone Bulbul completely devastated their life. Throughout West Bengal, approximately 3.5 million people were directly affected by the cyclone; 14 people died in storm-related incidents. A total of 517,535 homes and 1,489,924 hectares of crops were damaged or destroyed, with losses reaching Rs 238.11 billion leading to death toll to 41. (Source: Wikipedia). Mukti Started the relief operations one day prior to the cyclone, provided immediate help to 23,000 families of Sundarbans.

### Covid-19 pandemic (Feb 2020- Present)

Covid 19 pandemic has devastated the life of many people. The daily wage earners, domestic helpers from Kolkata, Daily labours or small vendors who are back in villages with no job and no food security. MUKTI supported the affected families by distributing Dry Ration, Sanitiser, Mask to 9,534 families. We started Hello Beta program during lockdown to deliver essential medicines to the old age people and pregnant women at their doorstep.

### Amphan (20 May 2020)

All our relief work came to a standstill on 20<sup>th</sup> May as **Cyclone Amphan(180km/hour)** passed over 40 villages of Sundarbans, devastated many lives and de-sheltered people, the death count is 98 as per official records. Mukti started rescue operations 2 days prior to cyclone and till date working on relief measures to rebuild the lives of affected families. MUKTI is targeting 50,000 families for long term relief. Till date, we provided relief to short term relief to 32,000 affected families.

### Death toll due to cyclone 'Amphan' in West Bengal now 98: Mamata Banerjee

PTI | May 29, 2020, 18:35 IST



KOLKATA: The death toll due to cyclone 'Amphan' in West Bengal has risen to 98, chief minister **Mamata Banerjee** said on Friday.

"As per reports of the district magistrates, the toll due to cyclone Amphan has gone up from 86 to 98. We are sending money to the next of kin of

### PM Modi reviews preparations against cyclone 'Amphan', assures all Central support

Last Updated: May 18, 2020, 07:38 PM IST

**Synopsis**  
The prime minister wrote on Twitter that he prays for everyone's safety "and assure all possible support from the central government." At the review meet, Modi took stock of the situation and reviewed the measures as well as the evacuation plan presented by the National Disaster Response Force.



NEW DELHI: Prime Minister **Narendra Modi** on Monday chaired a high-level meeting to review the response preparedness against **cyclone Amphan** developing in the **Bay of Bengal**, and assured all possible Central assistance to the states which are likely to be hit.

**India**

## 'Never seen such devastation before': CM Mamata says Amphan has completely destroyed Bengal

Cyclone Amphan causes massive destruction across at least 7 districts. 12 dead, damage to public property pegged at over Rs 1 lakh crore. CM Mamata has urged Modi govt for help.

### 'Damage worse than coronavirus crisis'

The situation in West Bengal is "grim" and Cyclone Amphan has caused "unthinkable damage" across some south Bengal districts including Kolkata, the CM said.

"It is a devastation I have not seen in my life. Nearly 99 per cent of South 24 Parganas — one of the districts where the cyclone hit — has been wiped out. The damage to the state is worse than that it suffered due to coronavirus," she said.

"Communication across districts has been cut-off. Roads and bridges have been destroyed. Administration needs to reach those places. However, no communication is possible now. It will take at least 4 to 5 days for the government to understand the extent of damage and estimate the cost," said Banerjee.

"We repaired the embankments and the bridges in South and North 24 Parganas districts just six months back, after Cyclone Bulbul hit us. Now we have to rebuild again. This time, the cyclone did not touch Odisha, and our Bangla is bearing the brunt," she said.

**Also read: 4.5 lakh people evacuated in West Bengal and Odisha ahead of cyclonic Amphan**

#### HIGHLIGHTS

- Cyclone Amphan batters Bengal, Odisha as lakhs evacuated, at least 10 dead
- The extremely severe cyclone packed winds of up to 190 kmph rampaged through coastal Odisha and West Bengal
- West Bengal CM Mamata Banerjee claimed at least 10-12 people lost their lives

An extremely severe cyclone Amphan packing winds of up to 190 kmph Wednesday rampaged through coastal Odisha and West Bengal, dumping heavy rain, swamping homes and farmland, and leaving at least 10 people dead, officials said.

While a man and a woman were reported killed when trees came crashing down on them in North 24 Parganas district of West Bengal, a 13-year-old girl died in a similar incident in adjoining Howrah. CM Mamata Banerjee claimed that at least 7-8 deaths have been confirmed due to the cyclone and many more are expected to be dead.

THE TIMES OF INDIA | MAY 22, 2020, 08:50:47 IST



### Cyclone Amphan live updates: Bengal CM announces Rs 1,000 cr fund for restoration work

At least 72 people have died in West Bengal due to cyclone Amphan, chief minister Mamata Banerjee said on Thursday. The rains and heavy winds caused massive damage to crops and infrastructure in Odisha too. A team of Union home ministry will visit the states to evaluate the damages done by the cyclone. Stay with TOI for all updates.

ASIA PACIFIC | Cyclone Amphan's Death Toll Rises to 80 in India and Bangladesh

Sankar Halder, who runs a nonprofit organization in West Bengal, said many people in his area did not take the cyclone seriously.

Villagers had become complacent, he said, having lived through cyclones before, and this time their biggest fear was coronavirus and crowding into a place where they might get infected.

"Even the local news was focused more on coronavirus than the cyclone," Mr. Halder said. "When the government finally started evacuating people and people realized the intensity of the storm, it was too late."

"The majority of the dead," he said, could have escaped but "died inside their homes."

### The New Humanitarian

25 years of jour

### As Cyclone Amphan barreled down on Nagendrapur village in the Indian state of West Bengal in late May, Manasi Halder faced a dilemma: run for shelter, or risk waiting out the storm.

In normal times, Halder would have gathered her neighbours and headed straight for the nearest official cyclone shelter about eight kilometres away. But with the coronavirus pandemic surging across the country, "people were not willing to leave the village," said Halder, who volunteers for a local NGO named Mukti. "They were afraid, because of the coronavirus outbreak."

Amphan could not have come at a worse time in the Sunderbans, a low-lying, disaster-prone region straddling parts of coastal India and Bangladesh. Both countries were weeks into lockdowns meant to contain coronavirus outbreaks that have now infected more than 343,000 people in India and 90,000 in Bangladesh. Evacuees were forced to choose between being caught in the storm's path, or the risk of catching the virus in crowded cyclone shelters.

Instead, the residents of Nagendrapur compromised. Rather than travel to the official shelter they headed to a school in the village. With help from Mukti Halder

### The New Humanitarian

25 years of journalism from



A man walks on a flood bank on Sager Island, West Bengal, in 2019, shortly after a nearby village had finished rebuilding from a storm a decade earlier. In May 2020, Cyclone Amphan breached the flood bank, destroying parts of the village again.

## Sunderbans hunger spectre

DEBRAJ MITRA

Calcutta: A third of 15,000 families associated with a Sunderbans-based non-profit organisation are starting at starvation because of the ongoing lockdown, the founder of the NGO said.

"Our reach is limited to five blocks in the Sunderbans. This number is from those five blocks alone. The actual number of people in a similar or worse condition in the entire region will be huge," said Sankar Halder, the founder of Mukti, whose work includes agricultural support for farmers, education of children and self-help business groups for women, to name a few.

Mukti has just concluded a survey among dependent families in Puthurgram, Mathurapur II and Kultali blocks in the wake of the lockdown. The survey categorised the families into three sections, the third being the worst-hit.

"The results show that 5,000 families are in the third category, meaning they need an immediate supply of food and water," said Halder, an IT professional who had founded Mukti in 2003.

Mukti has arranged dry ration, oil and other essential



People stand in queue to receive rice and potatoes from Mukti in the Sunderbans earlier this week

stuff for around 2,000 families, with help from some Calcutta-based organisations, led by the Kolkata Gives Foundation. But the fate of many others remains uncertain.

Halder shared a series of videos with Metro that captured the mood of the households the Mukti volunteers visited during the survey.

One such video shows a middle-aged woman, with a baby in her lap, and a hearing-impaired man next to her in a mud house. Another woman is seen sitting near the woman, what looks like mud oven. A girl is sitting near the woman.

"Khasai jachhena, Ranna karbo hore achi. Kinta ramni karbo ki dipa (We are not getting food, I am ready to cook

but what do I cook?), the middle-aged woman asks the volunteer.

Another video shows an elderly couple sitting in another mud house, with tarpaulin sheets acting as walls. The woman, who identifies herself as Greta Naskar, says she is a "cancer patient" and shows a big red lump on her right breast.

"We don't have anything to eat, nor any money to buy his medicine. Our son works in Calcutta. He has come back and is out in search of some cash or food," she says, before breaking down.

The men of the families are involved in farming, organic farming and fishing. The women are part of self-help

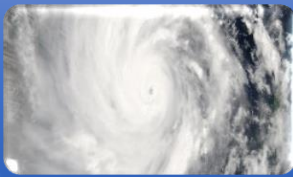
groups that make pickled rice, pickles, bori, dairy and other edibles. The women are also involved in poultry farming. They sell their products in the local wholesale markets from where the produce is sold in Calcutta and other places.

But the lockdown has shut most wholesale markets. The entire supply chain, from wholesaler to transporter to retailer, has been crippled. "Only one or two small bazaars are open. Say a farmer produces 200 quintals of ladies' fingers, he can sell only a minuscule portion in the retail market. His main source of income is the wholesale market. If that is shut, the farmer's income is also gone," Raghu Nath Baidya, a Mukti volunteer, said. "Around 60 per cent of our sales channels are shut."

The NGO has been ferrying a small portion of the organic produce to sell it at some of the city's apartment blocks. Lakhs from the Sunderbans embark on short journeys on packed suburban trains to and from Calcutta, help or sell vegetables at markets. A majority of these people have also come back with little or no cash, said Baidya.

Ms. Banerjee, the West Bengal minister, said that the region was in a "warlike" situation, and that the loss of lives could surpass the toll of Covid-19 there so far.

## Local Area Problems



### Disaster Problem

- Population of Sundarbans was estimated at 4.7 million in 2011.
- Sundarbans is an area of extreme poverty and ill health exacerbated by access difficulties.
- The area is prone to natural disasters such as Cyclones and flooding.
- Aila in 2009, Fani & Bulbul in 2019, Amphan in 2020



### Social Status

- Half of the population (47%) are historically marginalized groups such as Scheduled Castes and Tribes.
- More than 40% of households live below the poverty line
- 13% are officially declared as the “poorest of the poor”



### Agriculture

- Main occupations are farming and fishing.
- Cultivation depends on rainwater as the river water has high salinity, and over half of those engaged in farming are landless laborers.
- To protect fields from salty river water high embankments are built around cultivated land.
- Most of the male members of the area works outside the district or city for their livelihood



### Livelihood

- In Sundarbans, Climate induced displacement of people has been recorded.
- Most of the daily wage earners, domestic helpers, daily labour lost their job in pandemic.
- Lack of industries and livelihood opportunities has forced people to migrate outside the area to earn bread and butter.



### Health

- Morbidity rate is higher in Sundarbans than the state average. Health is low priority.
- Children are three times more prone to respiratory diseases and communicable diseases.
- Continuous calamities in the region has made people more prone to health hazards. Malaria, Dengue (water borne diseases), High fever are very common.



### Man-Animal Conflict

- People who collect honey in the forests or catch fish are under constant threat of attacks by animals and snake bites leading to Man-Animal Conflict
- The animal moment became regular after the cyclone
- The jungle/habitat of animals are being destroyed by Man which is forcing animals to move towards the city.



### Infrastructure

- Areas which have good infrastructure which connect communities to the mainland have higher socioeconomic status than island communities where transport relies on the waterways.
- More that 500,000 people became homeless after the amphan cyclone,damging more than 15,000 houses.
- People with no job at this point of time, facing very much difficulty in rebuilding their lives again.



### Human Trafficking

- Out migration of those of working age to cities and towns is very high and the worst social problem is human trafficking.
- A vast increase in Human Traficcking has been noticed after the pandemic and cyclone.
- Women and Children of the area are very prone to Human Trafficking. Their parents were forced to sell their children to earn some money for their survival.

## Mukti's Approach

### **Preparatory approach (-3 days to 0 days)**

The cyclonic storm has hit Sundarbans during an extremely difficult time when most people have already lost their jobs due to the coronavirus pandemic. To lend a helping hand and provide resources to the affected people, MUKTI stepped up and worked intensively with community by shifting them to a safer place prior to the onset of Amphan with the help of 8000 volunteers. Team of MUKTI in 9 Blocks of **South 24 Parganas**, and 1 block in North 24 Pgs. West Bengal were active ever since the cyclone alert came. A team of 8000 Volunteers and field workers evacuated vulnerable people and stationed them at the nearby schools and flood relief centres.

### **Immediate relief (1- 15 days)**

- Procured & Distributed Tarpaulin and Mosquito nets to the affected families.
- Cleared Roads and removed uprooted trees
- Rebuild broken River embankments
- De-watered (removing saline water from ponds and canals) ponds so that rainwater can be reserved to use for daily use and agriculture
- Provided Dry Ration to affected families and Cooked Meals to feed hungry people
- Drinking water points like tube wells were being sanitised and ponds were being restored by dewatering saline water

### **Short term relief (1-3 months)**

- Operated 2000 Medical camps which includes both online and offline consultation by renowned doctors.
- Distributed Paddy seedling to farmers to perform 250 bighas of Bijtala.
- Provided Food for 2000 workers under rebuilding of river embankment
- Prepared Nursery for large quantity of seedling production
- Desalinated 203 community ponds which later used for rainwater harvesting for domestic and agricultural needs
- Books, stationery, and educational support to impacted children
- Distribution of Sanitary napkins and baby Food to SHG women.

### **Long term relief (3 months & beyond)**

- Providing **food security** to 10000 migrant labourers whose lives and livelihoods have been severely impacted by Covid-19 and the lockdown and Amphan.
- Mangrove and Road-side Nursery Plantation for environment protection
- Coconut Nursery and Plantation for livelihood generation
- Food Security to Migrants and Amphan affected families
- Model Clean and Green Village for job creation & food security
- Cyclone tolerant housing
- Repairing around 200 **school buildings** affected by the Cyclone
- Micro-loan for **repairing houses** to 2000 Self-Help Group members
- Micro-loan for **livelihood generation** to 20000 Self-Help Group women

## Mukti's Intervention so far

### De-Watering (Flooded Saline Water) in impacted areas

When vast swathes of farmlands in the Sundarbans were inundated by sea water that breached the embankments during Amphan on 20th May 2020, residents were faced with two problems — shortage of drinking water and agricultural crisis. MUKTI embarked with restoration mission as water needed to be dried out of ponds before fresh rainwater could be harvested.

#### Issues

- Contamination of Land and Pond by flooded Saline water
- Non-availability of drinking water due to salinity of fresh-water bodies

#### Intervention

- Mukti Pumped out Saline water back in the river which is essential for Agriculture and Domestic purpose
- Mukti de-watered 89 community ponds in 4 different Gram Panchayats of South 24 Pgs. District.
- To address the problem of saline water impacted ponds, Mukti provided machines, diesel, and petrol to locals. 203 ponds have been de-watered by Mukti during Amphan



Gallery link:- <http://muktiweb.org/gallery/tag/AIDdewatering>

News link:- <https://muktiweb.org/saline-water-drainage-program-by-mukti-at-nagendrapur-village>

Video link: [https://www.youtube.com/watch?v=U8dBDOsQeto&ab\\_channel=MuktiIndia](https://www.youtube.com/watch?v=U8dBDOsQeto&ab_channel=MuktiIndia)

## Drinking Water support to the affected villages

### Issues

- Post Amphan, only a couple of tube wells could draw fresh water, and everyone form queues to draw drinking water from the few remaining wells stretched beyond 2 Km.

### Intervention

- Based on need and demand of community, we have provided drinking water support to through a Water tank to 19 villages for consecutive 2 months.
- villages of **Mathurapur II and Pathar Pratima block** of South Twenty-Four Parganas.
- We could reach out to **3433** such impacted families in **Kankandighi and Herambgopalpur Gram panchayat**



Gallery link:- <http://muktiweb.org/gallery/tag/GAABESU>

News link : <https://muktiweb.org/potable-water-distribution-program-by-mukti-at-kankandighi-gram-panchayat>

Video link : <https://www.youtube.com/watch?v=wbDfGPeUoQ>

## Food for Work in River Embankment relief to the affected families

### Issue

- Double challenge of Covid-19 & Amphan has ruinously impacted life of several daily wagers and migrant laborers.
- Lack of livelihood opportunities has deteriorated the present condition of the local community.

### Intervention

- To motivate daily labours and to take care of the immediate food needs of the affected families, Mukti provided support in form of **Food** items consisting of Rice, Potato and Onion to 3000 beneficiaries of value Rs 100 per day of work
- Under Food for Work program Mukti rebuild broken river embankment with the help of affected families to achieve twin result of providing livelihood opportunity and Desalination of water bodies
- We successfully covered 10 villages of 3 Gram Panchayats in 2 blocks.



Gallery link:- <https://muktiweb.org/gallery/tag/AIDreliefdistribution>

News link:- <https://muktiweb.org/muktis-food-for-work-program-to-build-a-better-future/>

Video link: [https://www.youtube.com/watch?v=IDR8Rz1Xulo&ab\\_channel=MuktiIndia](https://www.youtube.com/watch?v=IDR8Rz1Xulo&ab_channel=MuktiIndia)

## Community based Paddy Seedling preparation in impacted areas

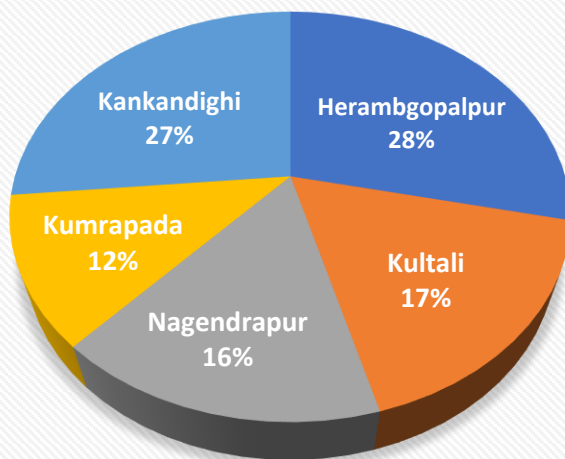
### Issue

- Post Amphan, 90% of the Agricultural Land flooded with saline water.
- The Saline agricultural field was not suitable for cultivation which was leading to food scarcity.
- Twin tragedy of Covid-19 & Amphan has ruinously impacted income opportunity for the farmers.

### Intervention

- Mukti started community-based seedling preparation to support farmers.
- 28 farmers were engaged in preparation of 37 Bighas of land for paddy seedling program. Benefitting 1306 beneficiaries in seedling preparation.
- 5 supervisors were appointed 1 in each block to look after the proper implementation of functioning of program.

### GP wise Distribution



Blocks Covered  
Mathurapur II, Pathar Pratima, Kultali

■ Herambgopalpur ■ Kultali ■ Nagendrapur ■ Kumrapada ■ Kankandighi



Gallery link:- <http://muktiweb.org/gallery/tag/AIDpaddyseedlingdistribution>

News link:- <https://muktiweb.org/paddy-seeding-plantation-program-by-mukti-for-amphan-affected-farmers>

Video link : [https://www.youtube.com/watch?v=GDQv-oRi4VM&ab\\_channel=MuktiIndia](https://www.youtube.com/watch?v=GDQv-oRi4VM&ab_channel=MuktiIndia)



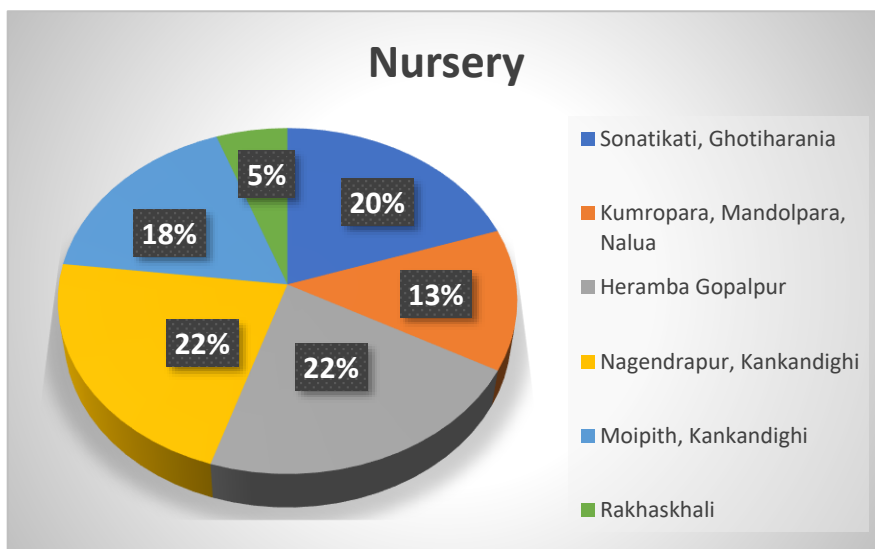
## Nursery preparation for Roadside plantation to restore greenery

### Issue

- Lack of livelihood opportunities due to unprecedented lockdown and cyclonic catastrophe in the region.

### Intervention

- Farmers prepared saplings for 3 months and provided ready saplings to SHG women in the month of September
- At present these nurseries are operational in 6 Gram Panchayats of South 24 Parganas district.
- MUKTI provided support to 2000 SHG group to prepare their own seedling nursery. Mukti provided material, labor cost and seeds support to the women.
- **Akashmoni, Mehogini, Sishu, Gamaru, Gayanim, Segun, Bokul** were some of the trees nurtured in these nurseries



Gallery link:- <https://muktiweb.org/gallery/tag/AIDnursery>

News link:- <https://muktiweb.org/seedling-nurturing-at-the-nurseries-of-mukti>

Video link : [https://www.youtube.com/watch?v=Fdrj40imR-8&ab\\_channel=MuktiIndia](https://www.youtube.com/watch?v=Fdrj40imR-8&ab_channel=MuktiIndia)

## Mangrove & Coconut Plantation in impacted areas

### Issue

- Regular onset of Natural Calamities and Cyclones
- Lack of livelihood opportunities

### Intervention

- Mukti is planting Mangrove with the help of SHG women as it has been proven that **Mangroves** plays an **important role** for humans, protecting communities from major storms. **Mangrove** roots can break up the force of a storm surge, soaking up some of its energy and protecting people **living** on coasts from **cyclone** damage.
- SHG women planted 1400 saplings of Mangrove in **Sahebadweep (island)** of **Mathurapur- II** block of South Twenty-Four Parganas.
- Mukti has started coconut nursery training to create employment in the village. 5 villagers have taken this training. Mukti financed them to buy 2000 coconut saplings each to have a head start with setting up the nursery along with Rs. 2000 monthly food support to each family.



Gallery link:- <http://muktiweb.org/gallery/tag/AIDmangroveplantation>

News link:- <https://muktiweb.org/save-the-endangered-mangrove-the-protectors-of-sunderban>

Video link : [https://www.youtube.com/watch?v=WN0yC36gojg&ab\\_channel=MuktiIndia](https://www.youtube.com/watch?v=WN0yC36gojg&ab_channel=MuktiIndia)

## Community Kitchen for immediate food support to impacted families

### Issue

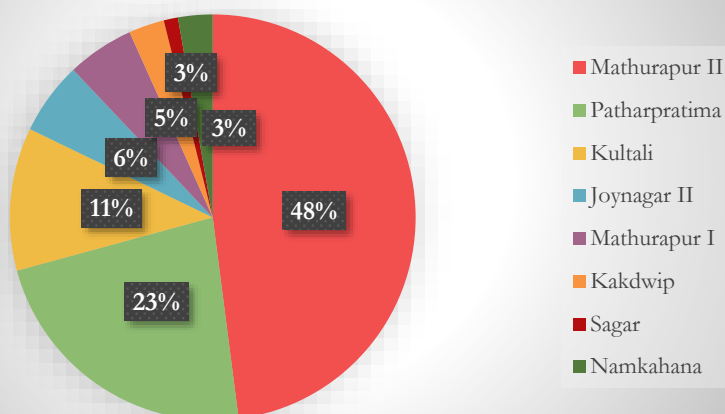
- Twin tragedy of Covid-19 & Amphan has ruinously impacted life of several daily wagers and migrant laborers.
- Lack of livelihood opportunities has deteriorated the present condition of the local community.

### Intervention

- MUKTI successfully operated 209 community kitchen for 1.5 months to provide cooked meal in batch of 30 people
- The idea behind community kitchen is to provide free, nutritious food as a public service.
- Total 1,25,466 **meals** were distributed among **7317** affected beneficiaries for two times a day for 1.5 month on daily basis



### Blockwise Beneficiaries Details



Gallery link

<http://muktiweb.org/gallery/tag/Uttoran>

News link

<https://muktiweb.weavernet.co.in/mukti-organized-community-kitchen-at-krishnachandrapur>

Video link:

<https://www.youtube.com/watch?v=hDTH5xtTGfK>

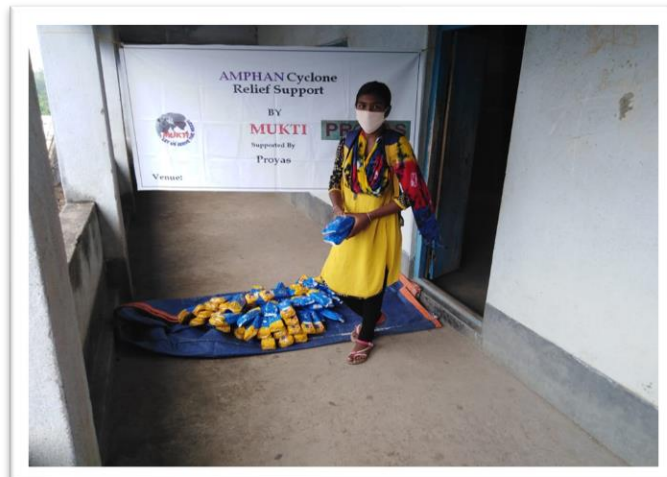
## Women & Child Support post Cyclone

### Issue

- Lack of Hygiene concern for women post Amphan
- Cyclone impacted the students badly as their books were scattered throughout the area, so many of them drowned, wet and torn.

### Intervention

- MUKTI provided 15,000sanitary napkins to the women. The Organization has purchased sanitary napkins on subsidised rates from market and distributed them amongst women.
- We provided Books, Stationary, Colour etc support to students in all 10 intervened blocks.
- With the help of volunteers, Mukti lead the Book Donation drive where housing complex from all over the Calcutta participated and donated the books for children.



Gallery link:- <https://muktiweb.org/gallery/album/mukti-distributed-sanitary-napkins-to-the-students-of-mukti-support-school>

News link:- <https://muktiweb.org/mukti-distributed-stationary-goods-to-the-students-of-mukti-community-study-center-and-mss>

Video Link : <https://www.youtube.com/watch?v=v1qHHP5xC3k>

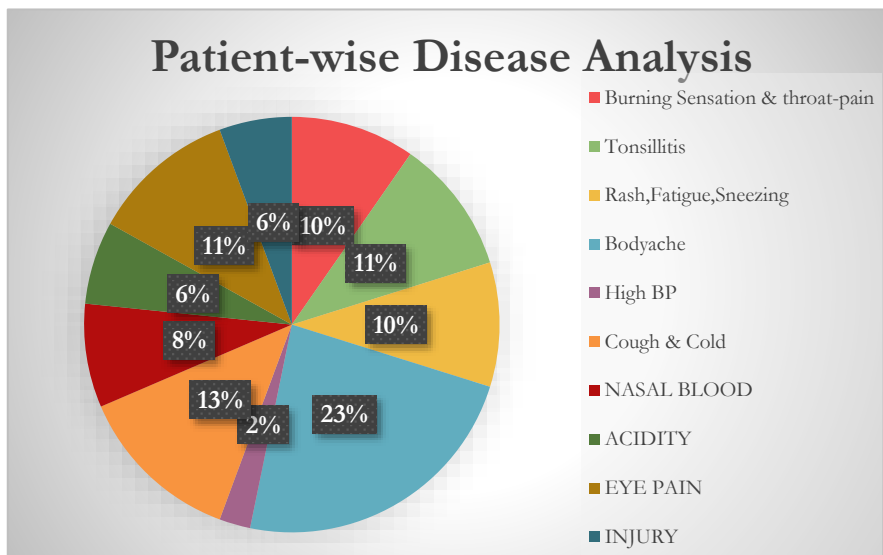
## Medical Camp support in the affected areas

### Issue

- Covid 19 pandemic raised the concern of health and hygiene among villagers as well.
- Post Amphan, Due to extensive water logging after Cyclone Amphan many patients complain of skin problems.

### Intervention

- Total 150 camps were conducted for 40 days covering 6 blocks and 113 villages benefitting around **12,301 people** from these camps.
- Each camp was being operated with one doctor and two support staff members.
- An online medical assistance from abroad were also being provided to the patients.
- The camps were done in multiple phases to diagnose, treat patients with different medical conditions to follow up their conditions which ensured their healthy recovery

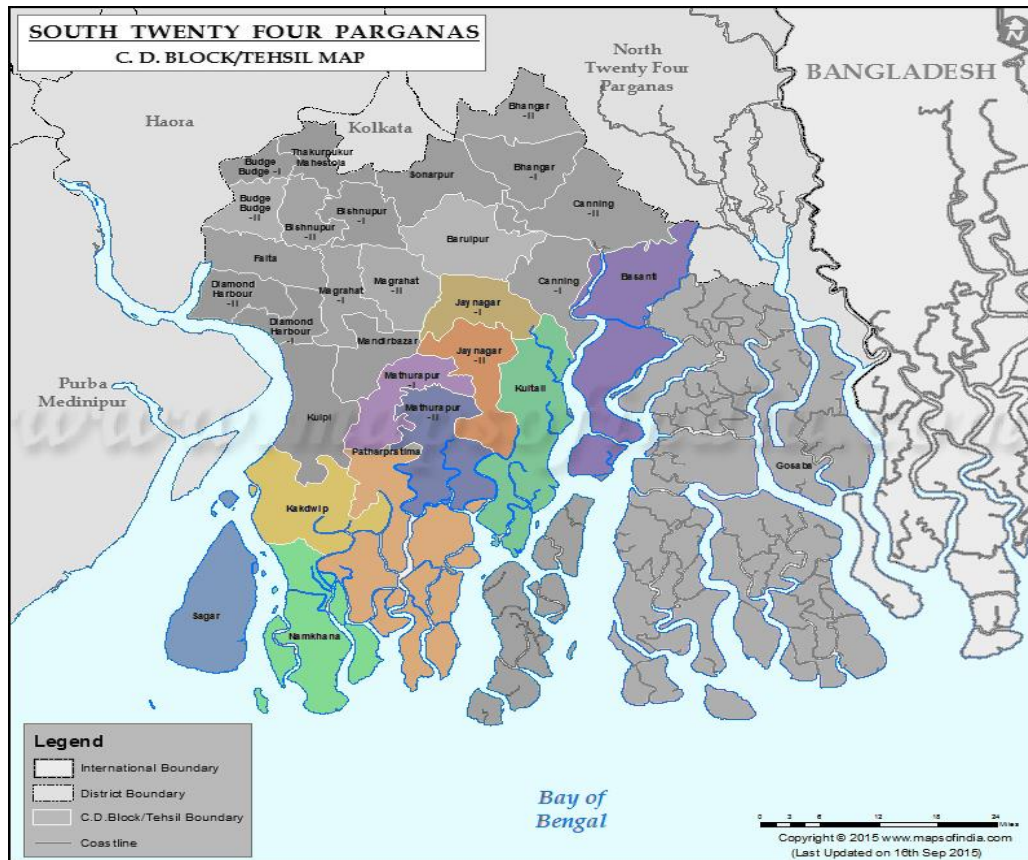


Gallery link <https://muktiweb.org/gallery/tag/Medicalcamp>

News link : <https://muktiweb.org/mukti-served-the-amphan-victims-through-various-medical-camps-at-sunderban>

Video link : <https://www.youtube.com/watch?v=BmloW55WPxE>

## Area Coverage by MUKTI



No	GP Name	Block Name	No	GP Name	Block Name	No	GP Name	Block Name
1	Nagendrapur	Mathurapur II	17	Durbachati	Patharprotima	33	Gobindakati	Higalganj
2	Kankandighi	Mathurapur II	18	Shridhar Nagar	Patharprotima	34	Jogeshganj	Higalganj
3	Radhakantapur	Mathurapur II	19	Brajaballabpur	Patharprotima	35	Kalitala	Higalganj
4	Nandakumarpur	Mathurapur II	20	Purnachandrpur	Patharprotima	36	Sahebkhali	Higalganj
5	Kumropara	Mathurapur II	21	Budhakhali	Namkhana	37	Bharatgar	Basanti
6	Raidighi	Mathurapur II	22	Narayanpur	Namkhana	38	Jhorkhali	Basanti
7	Bakultala	Mathurapur II	23	Mousumi	Namkhana	39	Sonakhali	Basanti
8	Nalua	Mathurapur I	24	Haripur	Namkhana	40	Dhoplat	Sagar
9	Krishnachandrapur	Mathurapur I	25	Shibrampur	Namkhana	41	Gangasagar	Sagar
10	Debipur	Mathurapur I	26	Swami Vivekananda	Kakdwip	42	Rudranagar	Sagar
11	Herombogopalpur	Patharprotima	27	Rishi Bankim Chandra	Kakdwip	43	Goramara	Sagar
12	Lakshmi Jonardan Pur	Patharprotima	28	Pratapaditya	Kakdwip	44	Durgapur	Jaynagar I
13	Ramganga	Patharprotima	29	Sri Sri Ramkrishna	Kakdwip	45	Baharu	Jaynagar I
14	Patharprotima	Patharprotima	30	Baikunthapur	Kultali	46	Nalgora	Jaynagar II
15	G-Plot	Patharprotima	31	Bhubaneswari	Kultali	47	Chuprijhara	Jaynagar II
16	Gopal Nagar	Patharprotima	32	Deulbari	Kultali	48	Jalaberia II	Jaynagar II

## An Appeal

MUKTI's improvements came to a standstill on 20th May as **Cyclone Amphan** passed over 40 villages of Sundarbans and wreaked havoc on the residents. The things really make us think of a very tragic trouble for **Delta people of Sundarbans** in W.B, India. Still remaining there an adverse aftermath of **Cyclone Aila (2009), Fani & Bulbul (in 2019), COVID 19** and now **Cyclone Amphan** devastated lives and de-sheltered people in the Delta making an unspeakable plight of people in prevailing pandemic.

People of Sundarbans are mostly dependent on fishing, farming, daily wages, and other agricultural activities for their livelihood. Due to regular cyclones in the region, soil salinity increases largely which reduces production significantly around 50% causing vulnerability to a large section of the society. Mukti, is working with 20,000+ women and farmers in Sundarbans, there are heavy chances that they might get transmigrated to other places and become victims of violence like human trafficking and can lead to STDs.

People have lost their home, their livelihood and all their assets in this catastrophe. An Extended time rehabilitation would be needed to recoup from the ravages of the Covid-19 and Amphan. The food security and livelihood support to the vulnerable section of society will provide them a life full of dignity and will also help cater the problem of women and child trafficking in the region.

The economy and lives of these people need to be rebuilt and revived. We would like to help rebuilding homes and economy by helping them in providing food support, Livelihood support, Renovating home etc. Team MUKTI is playing inclusive efforts to help the distressed population to the best. We would like to call upon your team to visit our site and monitor the work done by Mukti in this pandemic.

An Appeal from MUKTI to come forward and support in providing necessary relief support to 20,000 affected families. We must stand for humanity and a joint collaborative approach is absolutely needed to handle such a macro level disaster. We would love to hear from you back on this issue. Let us rebuild our Sundarbans together!!

Our World Heritage needs us the most.

Item Support	Number	Rate (INR)	Amount
Chick Support	10	40	400
Winter Vegetable Seeds	10 types	20	200
Food Support	5	100	500
Target Beneficiaries	30,000	160	48,00,000